

Locking Pins

product description

Over the past several years, a few customers have requested a non-padlocked means of preventing unintended and/or nuisance disconnection of their Deconnectors. In these cases, we recommend simply using a locking pin, as shown below, in place of a padlock. Of course, this requires that the receptacles be equipped with padlockable pawls.



Although the locking pins will not be included in Meltric's catalog, it is a solution you should be aware of.

These locking pins may be used with DSN, DS, DR and DN Series receptacles. In order to utilize the locking pins,

- DSN receptacles must be ordered with the "Padlock Pawl" option
- DS/DR/DN Series receptacles must be ordered with the "Padlockable Mushroom Pawl" option, or
- Existing receptacles must be modified to have padlockable pawls. Meltric can provide instructions for drilling a hole in DSN pawls and can also provide kits for replacing standard DS/DR/DN pawls with padlockable mushroom pawls.

ordering receptacles equipped with locking pins

The suffix number for including a stainless steel locking pin is **E964**. To order a receptacle equipped with the locking pin, the part number will include the receptacle part number, plus the appropriate locking pawl suffix, plus the E964 suffix. Two examples are shown below.

- DSN60 with Padlock Pawl and Locking Pin → 63-64043-**843-E964**
- DS60 with Padlockable Mushroom Pawl and Locking Pin → 33-64043-**843-E964**

ordering locking pins

Locking pins may be ordered either from Meltric or directly from McMaster Carr. Ordering directly from McMaster Carr will be quicker and will avoid the additional costs associated with the paperwork handling, shipping and commissions that will be incurred if the pins are purchased through Meltric.

Ordering from McMaster Carr

Use the table below to identify the desired McMaster Carr part number and published price.

Locking Pin Description	Item Material	McMaster Carr Part #	McMaster Carr Published List Price
Rounded Retainer with Tab	18-8 Stainless Steel	98480A034	\$5.69 each
Rounded Retainer with Tab	Zinc Plated Steel	98416A215	\$1.66 each

Product details: Usable length = 1-3/4" Pin diameter = 5/16"

Note: The 5/16" pin diameter is needed for proper operation – do not substitute smaller diameter pins.

Ordering from Meltric

The part number and list price for ordering the locking pin from Meltric are as follows:

Item Description	Item Material	Meltric Part #	Meltric 2007 List Price
Locking Pin	18-8 Stainless Steel	E964	\$26.79 each

Note: If a pawl replacement kit is needed (DS, DR, DN models), contact Customer Service.

modifying existing / installed receptacles

Instructions on how to modify existing devices to allow them to accept locking pins (or padlocks) are available from Meltric and are shown on the following page.

DSN Receptacles

DSN receptacles with standard pawls can be modified by drilling a lockout hole through the casing and pawl.

DS/DR/DN Receptacles

DS/DR/DN receptacles with standard pawls can be modified by replacing the pawl with a padlockable mushroom pawl. For information about how to order the pawl replacement kits, contact Meltric Customer Service.

Note: If the pawl is riveted to casing it can not be easily replaced. Devices damaged during modification will not be covered under warranty. Receptacles manufactured before September 2007 are NOT riveted.

instructions

INSTRUCTIONS

Modifications for Locking Pin



Applies to DSN Series Receptacle

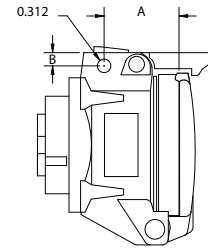
Tools required: Drill with 5/16" bit

Steps:

1. Secure DSN receptacle to allow drilling
2. Drill hole in casing/pawl to drawing specifications
3. Insert locking pin or padlock when desired

Notes:

- New DSN receptacles can be ordered with a padlockable pawl – see catalog
- Use of locking pin with 5/16" diameter and 1-3/4" useable length is recommended; smaller diameter locking pins may not prevent accidental disconnection



DSN Model	A	B
DSN20	.730	.300
DSN30	1.674	.286
DSN60	1.734	.306



4640 Ironwood Dr. • Franklin, WI 53132 • 800.433.7642 • Fax: 414.817.6161

INSPADLOCK_PAWL 072607 A

INSTRUCTIONS

PAWL REPLACEMENT DS/DR/DN/DSN Series

Important Note: If pawl is riveted to casing it can not be easily replaced. Contact Meltric for rivet drilling instructions and pawl replacement kits.

Tools required: Hammer or mallet, 1/8" pin punch, and pliers

1. If lid is normally open then open lid, if normally closed leave lid as is.
2. Using the pin punch, slowly drive out the pin that holds the pawl to the casing. Make sure to keep every thing straight and push pin fully out. If pin becomes crooked and punch is ineffective, pull out with pliers or vice grip taking care that the pawl and spring may fly away when pin is removed.
3. Set the receptacle in a stable position, against a hard surface. Set the new pawl and spring into position holding the pawl into place against the spring pressure and align hole in pawl with hole in casing.
4. Insert roll pin into hole while keeping pin straight with hole (AT ALL TIMES), gently hammer pin into position. It is fully in place when pin is flush with housing. It is important to keep pawl in proper place during this operation. If pin becomes crooked with hole then it will not be possible to have pin go through all four holes required for installation. It sometimes may be easier to place the pin punch through the other side to hold pawl in place when starting the roll pin, the pin when hammered will drive the punch out as it goes into the hole.
5. Press the pawl several times to ensure proper operation. The pawl should be free moving and not stick.



4640 Ironwood Dr. • Franklin, WI 53132 • 800.433.7642 • Fax: 414.817.6161

INSPADLOCK_PAWL 072607 A