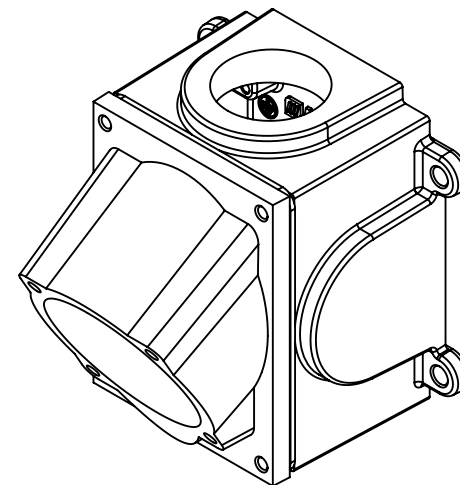
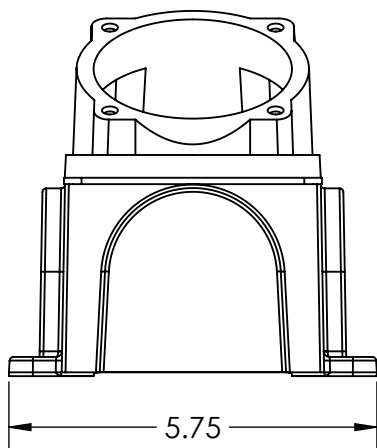
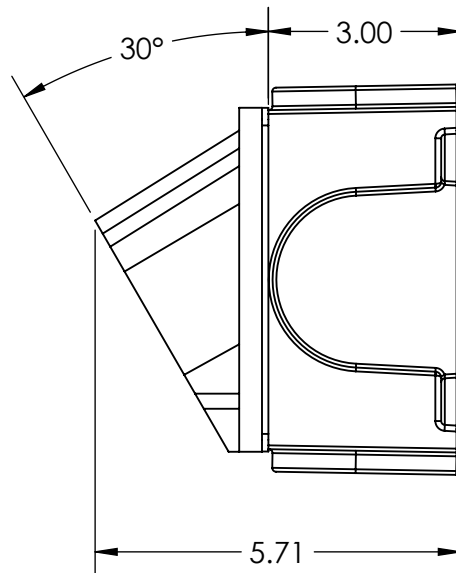
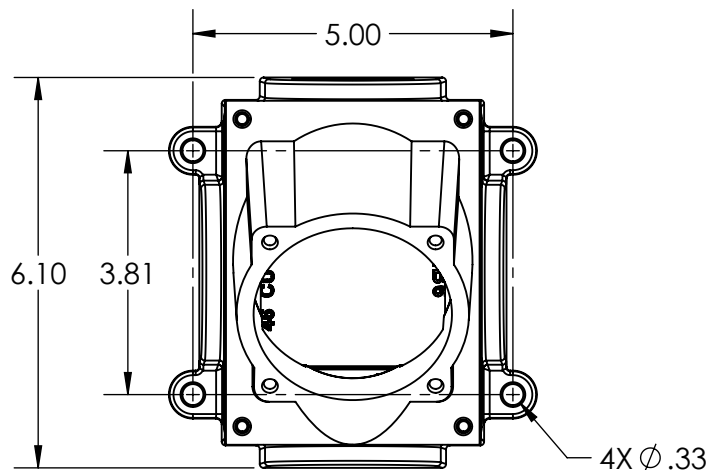
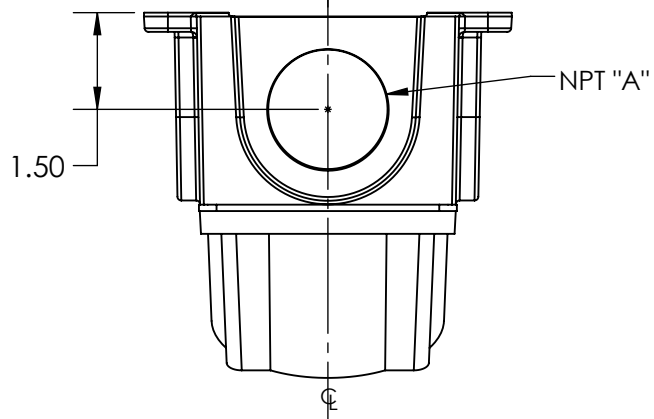
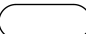


This drawing is the property of MELTRIC Corporation, Franklin (Milwaukee), Wisconsin, USA. Any unauthorized copying of this drawing by any means, ENG/RD/06 REV: 20 ISSUED DATE: 11/15/11 or disclosure of its contents to any person not authorized by MELTRIC Corporation or its agents to receive it, is strictly prohibited.



PART NUMBER	NPT "A"
794C3N10	1" NPT
794C3N12	1-1/4" NPT
794C3N15	1-1/2" NPT
794C3N20	2" NPT

TOLERANCES UNLESS OTHERWISE SPECIFIED		MELTRIC A COMPANY OF MARÉCHAL ÉLECTRIC	
MACHINED SURFACES $\sqrt{125}^{\text{MAX}}$	ENGLISH	DRAWN	APPROVED
GROUND SURFACES $\sqrt{32}^{\text{MAX}}$		DATE:	SCALE
ANGLE TOLERANCE $\pm 1^\circ$	0.X ± 0.05 0.XX ± 0.01 0.XXX ± 0.005	DRAWING TITLE: JUNCTION BOX WITH METAL ANGLE	
REMOVE BURRS & SHARP EDGES TO .015 MAX.		MATERIAL: PAINTED METAL	PART NUMBER: 794C3Nxx
 DIMENSIONS SHOWN IN OVALS ARE INSPECTION DIMENSIONS.		SHEET: 1 OF 1	REVISION