

DS7c



DS7c Multipin – 30A Plugs & Receptacles

Ratings

- **Voltage**
50 VAC or 600 VAC Max/130 VDC+
+ For DC order 600V model
- **Amperage Rating**
30A Current Interrupting
- **Environmental Ratings**
IP54/IP55
- **Temperature Range**
Min -40°F/Max 140°F
See pg 228 for temps below -15°F.
- **Wiring Capacity**
Min 14 AWG Max 8 AWG
- **Listings**
Contact Customer Service

For DS7c dimensions, see pgs 95-96

Receptacle (female)



Don't forget to add installation accessories to your order



Inlet (male)



For international configurations (CE) visit meltric.com/international-catalog or contact customer service at 800.433.7642.

Voltage	Polarity	Part #	
		Poly	Metal
50V	4P	33-34540	37-34540
50V	5P	33-34550	37-34550
50V	6P	33-34560	37-34560
50V	7P	33-34570	37-34570
600V	3P+G	33-34531	37-34531
600V	4P+G	33-34541	37-34541
600V	5P+G	33-34551	37-34551
600V	6P+G	33-34561	37-34561

Voltage	Polarity	Part #	
		Poly	Metal
50V	4P	33-38540	37-38540
50V	5P	33-38550	37-38550
50V	6P	33-38560	37-38560
50V	7P	33-38570	37-38570
600V	3P+G	33-38531	37-38531
600V	4P+G	33-38541	37-38541
600V	5P+G	33-38551	37-38551
600V	6P+G	33-38561	37-38561

Main Options

- 5/16" hole
 Padlock Pawl
- Mushroom Pawl**
- Self-Ejecting Devices**

* Requires straight insertion receptacle or inlet and self-ejecting plug or connector

Receptacle Options

Receptacle Options	Part #
With 2 Auxiliary/Pilot contacts	Recept # - 172
With 3 Auxiliary/Pilot contacts	Recept # - 173
Type 4X & closed lid configuration	Recept # - 4X
Straight Insertion	Recept # - 352
Self-Ejecting Connector Release	Recept # - 354
Mushroom Pawl	Recept # - 375
Locking Mushroom Pawl	Recept # - 845
Padlock Pawl	Recept # - 843
Padlockable Mushroom Pawl	Recept # - 375- 843
Metal Pawl (on poly receptacle)	Recept # - 824
Closed Lid Configuration	Recept # - NC

Inlet Options

Inlet Options	Part #
With 2 Auxiliary/Pilot Contacts	Inlet # - 172
With 3 Auxiliary/Pilot Contacts	Inlet # - 173
Type 4X Watertightness	Inlet # - 4X
Self-Ejecting Plug Release	Inlet # - 338
With No Lockout Hole	Inlet # - A155



See pgs 205-214 for detailed information on these options

DS7c Order Example:

To order a device with a Mushroom Pawl, add **-375** to the receptacle part number.
DS7c 4P = 33-34540-375

Installation Accessories

Unless indicated otherwise, accessories can be used with either poly or metal plugs and receptacles.

Handles



Not Type 3R



Makes connector closures easier

NPT	Poly Handle	Metal* Handle	Cable Range	Nylon Handle	Neoprene Handle	Poly Handle w/Clamp & Bushing	Poly Handle w/built in Draw Grips
1/2"	6PH12	6H12	.50 - 1.25	-	31-611	-	-
3/4"	6PH34	6H34	.51 - 1.38	FH611	-	-	FH611-473
1"	6PH1	6H1	1.250 - 1.375	-	-	6PM622	-
1 1/4"	6PH114	6H114	1.438 - 1.562	-	-	6PM625	-
1 1/2"	6PH112	6H112	1.562 - 1.688	-	-	6PM627	-
			1.688 - 1.812	-	-	6PM629	-

- Notes:**
- Finger draw plates are recommended for easier connector closure on cord to cord assemblies.
 - For available cord grips, see pgs 171-172.
 - * For metal devices only.

Angles



Nylon 30° Angle	Metal 30° Angle	Metal 70° Angle	Metal Angle+ Oversized 30°	Metal Straight Adapter	Metal Lateral Angle 30°
MP6	MA6	89-6A027	MA660	MS6	MAB6

+ Mounts on oversize box only. Order with MB10xxx box. See page 48.

Junction Boxes



61.4 in³⁺



59.9 in³⁺



28.1 in³⁺



184.0 in³⁺

NPT	Metal Box	Metal Box with Nylon Angle	Metal Box with Metal Angle	Poly* Conduit Entry	Poly 70°** Wall Box
1/2"	-	-	-	MC612	51-DA058
3/4"	-	-	-	MC634	51-DA058
1"	MB61	31-6A053-080-1	39-6A053-080-1	MC61	51-DA058
1 1/4"	MB6114	31-6A053-080-114	39-6A053-080-114	MC6114	51-DA058
1 1/2"	MB6112	31-6A053-080-112	39-6A053-080-112	-	51-DA058
2"	MB62	31-6A053-080-2	39-6A053-080-2	-	51-DA058

* For poly devices only

** 70° boxes are not drilled. Contact customer service if factory drilling is required.

+ Interior volume with receptacle installed.

Miscellaneous Accessories



* Set of Two (2)



For Male Devices Only



For Male Devices Only



Finger Drawplates	Protective Cap	Padlockable Cap Aluminum	Inlet Spring-Loaded cap	Receptacle+ Lockout Pin
FDP6	31-6A126	DS6MC	31-6A226	LP-843

* Recommended for cord to cord assembly applications, for easier connector closure.

+ Requires Padlockable Pawl option (-843) on receptacle.

NPT Guidelines

Cable Range	NPT
.312 - .625	1/2"
.438 - .812	3/4"
.660 - 1.000	1"
.875 - 1.375	1 1/4"
.890 - 1.812	1 1/2"

NPT sizes are determined by the cable diameter and third party cord grip.

Order Example

A typical order should include an inlet part number, a receptacle part number **AND** the matching handles, angles or other required accessories.



Male Inlet with Handle (Plug)
33-38540 + FH611



Female Receptacle with Angle Adapter
33-34540 + MP6

DR7c



DR7c Multipin – 50A Plugs & Receptacles

Ratings

- **Voltage**
50 VAC or 600 VAC Max/130 VDC+
+ For DC order 600V model
- **Amperage Rating**
50A Non-Current Interrupting
- **Environmental Ratings**
IP54/IP55
- **Temperature Range**
Min -40°F/Max 140°F
See pg 228 for temps below -15°F.
- **Wiring Capacity**
Min 14 AWG Max 8 AWG
- **Listings**
Contact Customer Service

For DR7c dimensions, see pgs 95-96

Receptacle (female)



Don't forget to add installation accessories to your order



Inlet (male)



For international configurations (CE) visit meltric.com/international-catalog or contact customer service at 800.433.7642.

Voltage	Polarity	Part #	
		Poly	Metal
50V	4P	31-34940	39-34940
50V	5P	31-34950	39-34950
50V	6P	31-34960	39-34960
50V	7P	31-34970	39-34970
600V	3P+G	31-34931	39-34931
600V	4P+G	31-34941	39-34941
600V	5P+G	31-34951	39-34951
600V	6P+G	31-34961	39-34961

Voltage	Polarity	Part #	
		Poly	Metal
50V	4P	31-38940	39-38940
50V	5P	31-38950	39-38950
50V	6P	31-38960	39-38960
50V	7P	31-38970	39-38970
600V	3P+G	31-38931	39-38931
600V	4P+G	31-38941	39-38941
600V	5P+G	31-38951	39-38951
600V	6P+G	31-38961	39-38961

Main Options

- 5/16" hole
 **Padlock Pawl**
-  **Mushroom Pawl**
-  **Self-Ejecting Devices**

* Requires straight insertion receptacle or inlet and self-ejecting plug or connector

Receptacle Options

Receptacle Options	Part #
With 2 Auxiliary/Pilot contacts	Recept # - 172
With 3 Auxiliary/Pilot contacts	Recept # - 173
Type 4X & closed lid configuration	Recept # - 4X
Straight Insertion	Recept # - 352
Self-Ejecting Connector Release	Recept # - 354
Mushroom Pawl	Recept # - 375
Locking Mushroom Pawl	Recept # - 845
Padlock Pawl	Recept # - 843
Padlockable Mushroom Pawl	Recept # - 375- 843
Metal Pawl (on poly receptacle)	Recept # - 824
Closed Lid Configuration	Recept # - NC

Inlet Options

Inlet Options	Part #
With 2 Auxiliary/Pilot contacts	Inlet # - 172
With 3 Auxiliary/Pilot contacts	Inlet # - 173
Type 4X Watertightness	Inlet # - 4X
Self-Ejecting Plug Release	Inlet # - 338
With No Lockout Hole	Inlet # - A155



See pgs 205-214 for detailed information on these options

DR7c Order Example:

To order a device with a Mushroom Pawl add **-375** to the receptacle part number.
DR7c 4P = 31-34940-375

Installation Accessories

Unless indicated otherwise, accessories can be used with either poly or metal plugs and receptacles

Handles



Not Type 3R

Makes connector closures easier

NPT	Poly Handle	Metal* Handle	Cable Range	Nylon Handle	Neoprene Handle	Poly Handle w/Clamp & Bushing	Poly Handle w/built in Draw Grips
1/2"	6PH12	6H12	.50 - 1.25	-	31-611	-	-
3/4"	6PH34	6H34	.51 - 1.38	FH611	-	-	FH611-473
1"	6PH1	6H1	1.250 - 1.375	-	-	6PM622	-
1 1/4"	6PH114	6H114	1.438 - 1.562	-	-	6PM625	-
1 1/2"	6PH112	6H112	1.562 - 1.688	-	-	6PM627	-
			1.688 - 1.812	-	-	6PM629	-

- Notes:**
- Finger draw plates are recommended for easier connector closure on cord to cord assemblies.
 - For available cord grips, see pgs 171-172.
 - * For metal devices only.

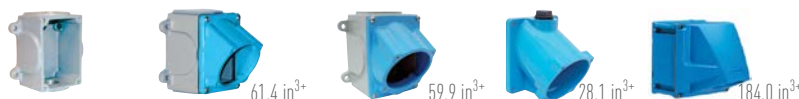
Angles



Nylon 30° Angle	Metal 30° Angle	Metal 70° Angle	Metal Angle+ Oversized 30°	Metal Straight Adapter	Metal Lateral Angle 30°
MP6	MA6	89-6A027	MA660	MS6	MAB6

+ Mounts on oversize box only. Order with MB10xxx box. See page 48.

Junction Boxes



NPT	Metal Box	Metal Box with Nylon Angle	Metal Box with Metal Angle	Poly* Conduit Entry	Poly 70°** Wall Box
1/2"	-	-	-	MC612	51-DA058
3/4"	-	-	-	MC634	51-DA058
1"	MB61	31-6A053-080-1	39-6A053-080-1	MC61	51-DA058
1 1/4"	MB6114	31-6A053-080-114	39-6A053-080-114	MC6114	51-DA058
1 1/2"	MB6112	31-6A053-080-112	39-6A053-080-112	-	51-DA058
2"	MB62	31-6A053-080-2	39-6A053-080-2	-	51-DA058

- * For poly devices only
 ** 70° boxes are not drilled. Contact customer service if factory drilling is required.
 + Interior volume with receptacle installed.

Miscellaneous Accessories



* Set of Two (2) For Male Devices Only For Male Devices Only

Finger Drawplates	Protective Cap	Padlockable Cap Aluminum	Inlet Spring-Loaded cap	Receptacle + Lockout Pin
FDP6	31-6A126	DS6MC	31-6A226	LP-843

- * Recommended for cord to cord assembly applications, for easier connector closure.
 + Requires Padlockable Pawl option (-843) on receptacle.

NPT Guidelines

Cable Range	NPT
.312 - .625	1/2"
.438 - .812	3/4"
.660 - 1.000	1"
.875 - 1.375	1 1/4"
.890 - 1.812	1 1/2"

NPT sizes are determined by the cable diameter and third party cord grip.

Order Example

A typical order should include an inlet part number, a receptacle part number **AND** the matching handles, angles or other required accessories.



Male Inlet with Handle (Plug)
31-38940 + FH611



Female Receptacle with Angle Adapter
31-34940 + MP6