

MELTRIC PRESENTS...

DECONTACTOR™ SERIES SWITCH RATED WELDING RECEPTACLES



➔ Provide Safety of a Switch

Integral switching mechanism enables safe make and break of inductive loads

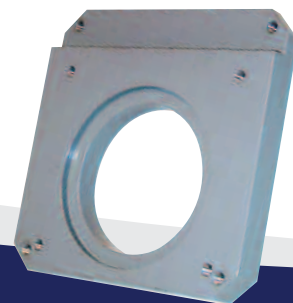
➔ Ensure Arc Flash Protection

Workers are never exposed to arcing or live parts

➔ Simplify Compliance to NFPA 70E

Requirements for working near live parts can be avoided

Adapter plates
simplify conversion of
existing back boxes



What is the status of your welding receptacles?

**NEED TO UPGRADE
PIN & SLEEVE**

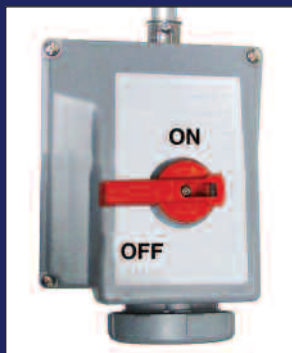


Warning: May expose workers to live parts or arc flash.

Requirement: Ancillary safety switch must be voltage tested to verify deenergization.

NFPA 70E hazard risk category 2.

**EASILY DEFEATED
MECHANICAL INTERLOCK**



Warning: Interlocks are easily defeated with extension cords. Switch failure can result in exposure to arc flash during plug removal.

Requirement: Safety switch still must be voltage tested to verify deenergization.

NFPA 70E hazard risk category 2.

**ARC FLASH SAFE
DECONTACTOR**



Integral switch mechanism ensures safe make and break.

Plug is always deenergized before it can be removed.

Arc flash chambers prevent outside exposure to arc flash

Safety shutter maintains NFPA 70E hazard risk category of 0.



The DECONTACTOR™ ADVANTAGES

- ✓ **UL & CSA switch ratings ensure safe load breaking/making – even in overload situations.**

Decontactors are UL Subject 2682 listed as “Switch Rated Plugs & Receptacles” up to 200A & 60 hp. When used on an extension cord the Decontactor is an inline switch.

- ✓ **Dead front construction prevents exposure to live parts and arc flash hazards.**

The need for flash protection boundaries and cumbersome PPE is eliminated. Decontactors maintain a NFPA 70E ‘hazard risk category’ equal to zero.

- ✓ **Separation of the plug & receptacle provides verification of deenergization.**

Voltage testing is not required. Visible contact separation proves the power is off.

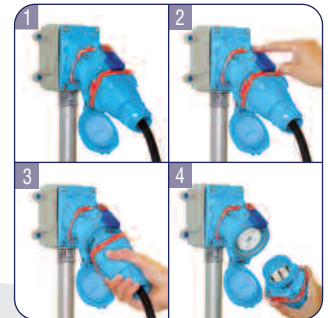
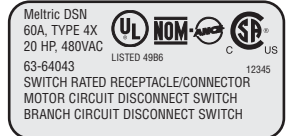
- ✓ **Plug & play simplicity allows any qualified employee to quickly connect and disconnect electrical equipment.**

Specially trained electrical workers are not required for load making/breaking. Downtime related to equipment change-outs can be reduced by up to 50%.

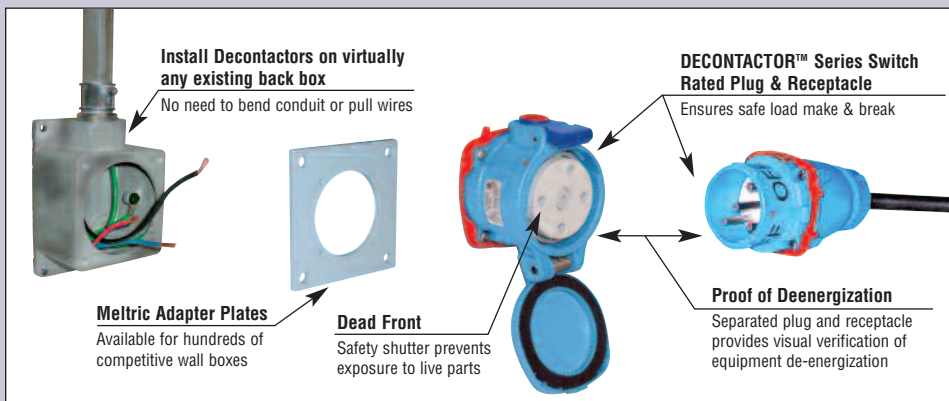
- ✓ **Lockout provisions facilitate easy compliance with lockout/tagout requirements.**

Only your lock and tag are needed, no additional mechanisms are required. (Provisions are standard on the plug and optional on the receptacle.)

Typical Device Label



LOW COST RETROFIT SOLUTION



Presented by Meltric and:

